

Washington, D.C. Legislative Trip Itinerary January 29 – February 1, 2006

Sunday, January 29

A van will be waiting for those arriving on Sunday at 6:19 p.m. Party arrives at various times. Check in to hotel, dinner on your own.

Residence Inn Washington DC - Vermont Avenue
1199 Vermont Ave. NW
Washington, DC, 20005
Phone: (202) 898-1100
Fax: (202) 289-0947

\$153 per night for three nights checking in January 29 and departing February 1 – each of you should have received a confirmation number for your hotel room. Dan and Robin will handle costs associated with the lodging and you will be billed after the trip.

Monday, January 30th

Breakfast on your own (The hotel provides a complimentary hot breakfast).

8:00 am Meet in hotel lobby to assemble for first appointment

8:30 am U.S Chamber of Commerce
1615 H St., NW. - 202-659-6000

Speakers:

- Renewable Energy
- Transportation
- Health Care

12:00 pm Lunch on your own

2:00 pm Aviation – Dirksen 215
FAA – Dennis Roberts, Director of Airport Planning and Programming

2:30 pm 19th Street Overpass – Dirksen 215

3:00 pm Energy – Dirksen 215

3:45 pm Food Industry Concerns – Dirksen 215
H.R. 4167 – National Uniformity for Food Act (FDA)
S. 908 – Personal Responsibility in Food Consumption Act
(Jud)

4:30 pm Park Inn Hotel/City National Bank Building – Dirksen 215

- 5:00 pm Wastewater Treatment Plant – Dirksen 215
- 5:15 pm Regional Economic Development Initiative, NIACC – Dirksen 215
- 6:30 pm Dinner with **Senator Charles Grassley – *The Monocle***
Capitol Hill, Senate side - 107 D Street NE (202) 546-4488

Tuesday, January 31st

- 10:30 am **Congressman Leonard Boswell**
1427 Longworth House Office Building
- 11:30 am **Senator Tom Harkin** 731 Hart Senate Office Building
- 12:30 pm **Congressman Jim Nussle**
303 Cannon House Office Building
- Dinner On your own

Wednesday, February 1st

- 10:30 am **Congressman Steve King**
1432 Longworth House Office Building
- 12:00 pm **Congressman Tom Latham**
Luncheon Meeting (Meet at 2447 Rayburn House Office Building)
The Members' Dining Room – U.S. Capitol
- 3:45 pm Pick up luggage at hotel; depart for airport, return to Mason City

19th Street SW Grade Separation Project

Background: 19th Street is a four-lane arterial in Mason City. Near Pierce Avenue the street is blocked by an average of 42 trains per day for 6 1/2 hours per day by the Union Pacific Railroad tracks. The street accommodates 10,400 vehicles per day.

The difficulties with conflicting vehicular and rail traffic for this location can be summarized in four areas:

1. **Congestion:** When a train is crossing 19th Street, traffic must either wait for the train to clear or detour approximately three miles through residential and industrial neighborhoods. During an annual business survey, primary employers in the area listed the 19th Street corridor as a major concern with trains detaining employees and truck traffic delivering raw materials or moving finished products. Area residents are publicly protesting lengthy waits at the rail lines that average 507 cumulative hours per day. Recent and future Industrial developments in South Industrial Park and Monroe Industrial Park are/would also increasing the volume of trains per day.
2. **Air Quality:** The City of Mason City has been one of the very few areas of the State unable to meet air quality attainment standards. Emissions from idling vehicles exacerbate this pollution problem.
3. **Growth & Development:** Adding an additional rail line to the new 1,200-Acre industrial park is essential in attracting new industrial development. Industrial prospects have turned away from the area for the lack of a second rail access. Railroad companies have expressed interested in constructing additional rail lines to serve the area. However, a new rail line crossing at 19th is not pragmatically feasible without an overpass because of the current level of congestion.
4. **Emergency Response:** The Union Pacific Railroad intersects 19th Street, and a second rail line, owned by Iowa Traction, parallels the north side of 19th street. With both rail lines crossing within this area of town, our ability to respond with emergency services (ambulance and fire protection) has been cut off at times.

Progress: Since last year, a feasibility study has been completed and a grant request submitted to the State for this project. A decision related to the state grant is anticipated in March.

Budget: Proposed sources of funds include:

City of Mason City	\$1,000,000
Iowa Clean Air Attainment Program (Pending)	\$ 880,900
Union Pacific Railroad	\$ 160,000
Federal Request 2006	\$1,000,000
Federal Request 2007	\$2,800,000
Federal Request 2008	\$1,700,000
Total Cost	\$7,540,900

Potential Federal Resources:

SAFTEA-LU (Safe Accountable Flexible Transportation Equity Act - A Legacy For Users)

The following page will illustrate the location of the area in need of the overpass and we have also included computer generated renditions of what the structure would look like as proposed.

19th Street SW Grade Separation Project

Truck Traffic

Map #	Company	Total Truck Traffic
1	AG Processing	125
2	Comprehensive Systems	1
3	Con Agra Foods	50
4	FRC	3
5	Golden Grain Energy	150
6	Graham	20
7	Henkel Construction	24
	Henkel Construction	50**
8	IMI Cornelius	20
9	Kabrick	24
10	Land o' Lakes	15
11	Mason City Iron & Metal	60
	Mason City Iron & Metal	21**
12	MBM	52
13	Minnesota Rubber	10
14	Petroblend	25
15	Plumb Supply	52**
	Plumb Supply	8
16	Premium Beverage	22
17	Sunny Fresh Foods	45
18	UniSelect	20
	TOTALS	797

** denotes pick up truck/van

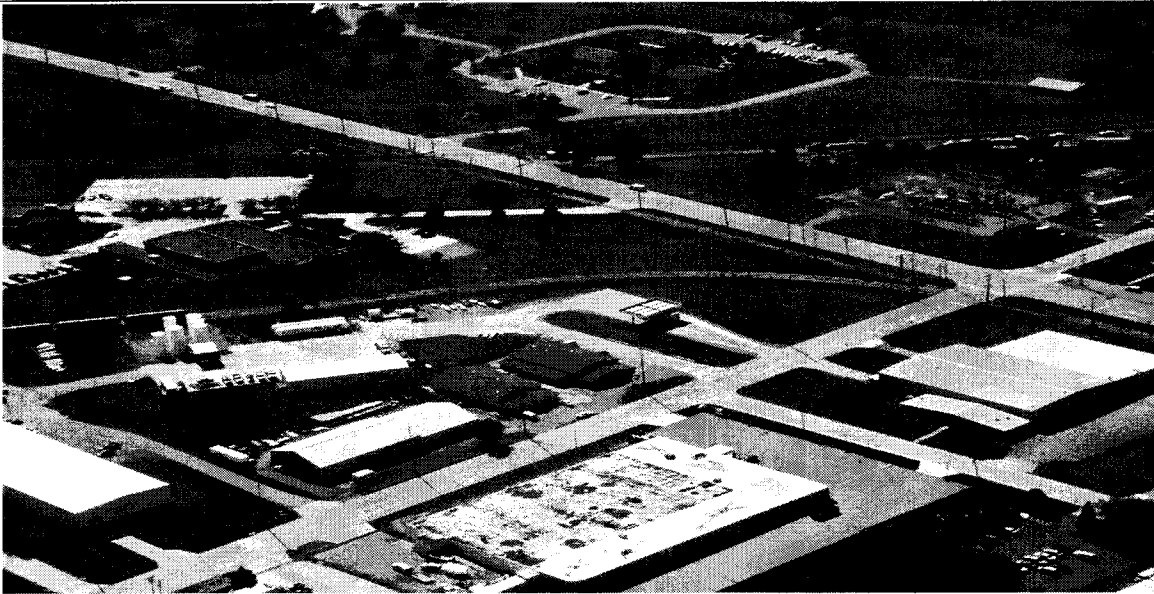
Other Information		
Newman Catholic Schools	613 students K-12	12 buses daily
IOOF Home	70 residents	85-100 plot cemetery
Three Links	31 apartments	
Comprehensive Systems YMCA	43 special needs individuals 6000 memberships	16 supportive administrative

Correspondence from Plant Manager

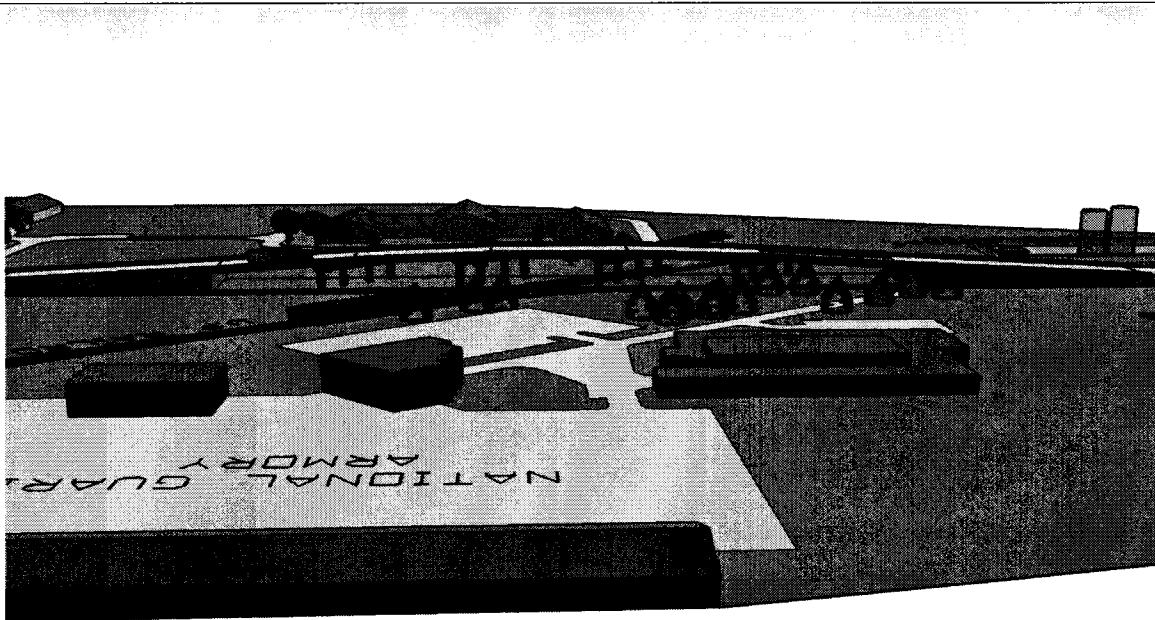
*"If you remember when we met, one of the concerns I had was the traffic control at Benjamin and 19th street. I am traveling today and just received a call from my warehouse manager that my office manager was involved in a major accident at that very intersection. I don't know her condition yet, and the details are very sketchy, but please do what you can to raise the attention of the city that this is a dangerous intersection and traffic control is a necessity! We need traffic lights, stop sign or some traffic control at that point before, and I repeat, **before**, someone is killed. Each meeting I have had with the EDC I have expressed the same concern. Now that concern has hit home. I implore you, on behalf of my employees, the students at Newman, and all who travel this route, to do what you can to raise our cities awareness of this situation in the hope of immediate preventative/corrective action."*

"Thank you in advance for your help."

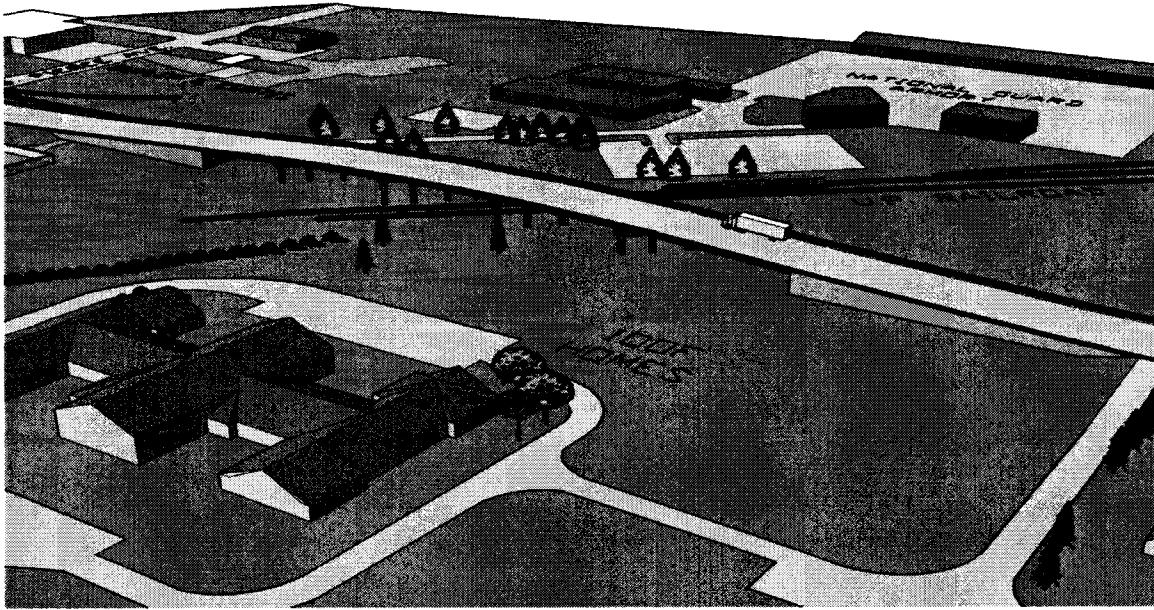
19th Street SW aerial looking southwest



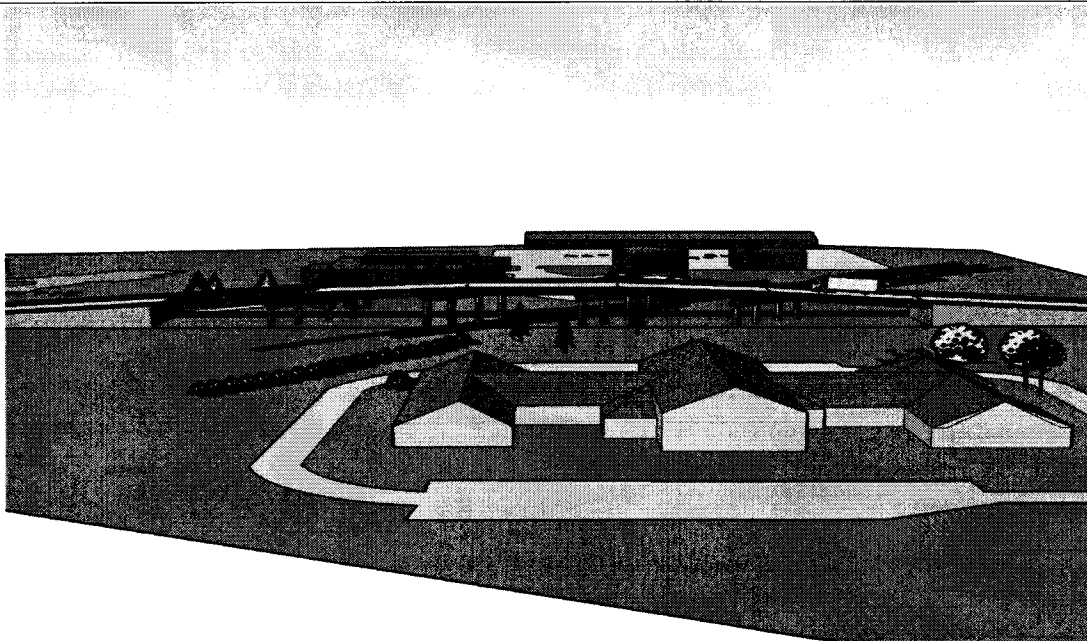
19th Street SW aerial looking southeast



Rendition of proposed overpass looking south



Rendition of proposed overpass looking northwest



Rendition of proposed overpass looking north